



PRESS KIT 2026

- 2 *Editorial*
- 3 *Novelties 2026*
- 3 *nya table*
- 5 *nya chair*
- 7 *nya occasional furniture*
- 9 *nya kitchen*
- 11 *core occasional furniture*
- 14 *New materials*
- 16 *Interview with designer Stephanie Jasny*
- 18 *TEAM 7. The Art of Living with Wood.*
- 20 *Designer portraits*



Stefan and
Georg Emprechtlinger

Editorial

2026 marks a significant creative shift for TEAM 7. We are broadening our design scope with organic stylistic elements that give spaces a softer, more sensual feel and make a more instantly inviting impression. The starting point for this new venture is our collaboration with Berlin-based designer Stephanie Jasny, whose ideas reflect a whole new way to combine precision and softness. With nya, we are introducing flowing forms that evoke a sense of ease and calmness, showcasing our solid wood in a unique way.

The nya table is the focal point of this new product range: a sculptural centrepiece with a striking base, gentle curves and a graceful silhouette that makes itself right at home in any living space. The matching chair translates this style into a soft, body-hugging form with generous upholstery and distinctly defined lines. The nya occasional furniture seamlessly picks up on this new design concept to create smooth transitions between living, dining and cooking environments. The collection is complemented by a kitchen that incorporates the same soft curves to subtle effect, bringing a balanced blend of warmth and precision craftsmanship into the kitchen space.

Meanwhile, the core collection takes us back to the very essence of our brand: solid wood in its purest form. This occasional furniture series is based on precise geometric shapes and shines the spotlight on the distinctive qualities of wood as a material. We have made a conscious choice to keep the range of design variations to a minimum, focusing instead on finely crafted details and clear functionality, executed with refined precision. core stands in deliberate contrast to nya and demonstrates just how versatile TEAM 7's signature style has become.

Together, our new products for 2026 expand our design universe in a way that truly strengthens our brand – based on sensually expressive style, precisely crafted execution and an absolutely consistent approach. Our aim is to create spaces that people understand intuitively, filled with furniture designed to last. nya and core represent our commitment to pursuing this intent with the utmost passion for materials and design.

Dr. Georg Emprechtlinger
CEO, Managing Director

Stefan Emprechtlinger
Managing Director

NOVELTIES 2026

ORGANIC DESIGN ROUNDED OFF WITH PRECISION – THE NYA TABLE BY TEAM 7

Design: Stephanie Jasny

Organic style meets design defined by perfect precision: with soft lines and a sculptural metal frame, the nya table lends rooms a sense of calm and cosy elegance. The aim of designer Stephanie Jasny and TEAM 7 was to create a piece of furniture that has emotional appeal, but also makes a strong impression on a technical and aesthetic level – with a silky-smooth tactile feel, innovative extension technology and all the warmth of genuine solid wood.

Curved contours and seamless shifts

Aside from the curved contours and gently chamfered table edge, which brings out the sensual character of the wood, the hallmark feature that gives the nya table its distinctive look is the striking base. Made using die-cast aluminium, it follows a simple shape with smooth, seamless transitions that cleverly combines stylish sophistication with structural stability. A longitudinal support incorporated directly into the design keeps the table standing securely despite its slender geometry. The subtly tapered legs emphasise the visual lightness of the design, while the balanced proportions ensure there is plenty of comfortable seating space. Hand-picked wooden surfaces, with a continuous grain running throughout the table top and insert, also add to the overall impression of perfect poise.

The perfect blend of design and technology

nya is available as a non-extendable table with a rectangular or boat-shaped table top, or in an extendable version with a rectangular top. It also comes in a wide range of sizes, colours and materials. This creates lots of scope for customising





the design and adapting it to personal preferences in all kinds of interior settings. The nya table is both impressively sophisticated in technical terms and appealingly user-friendly: the extendable version features a smooth synchronised extension mechanism with integrated inserts, softly damped on both sides, yet with a slim profile to ensure plenty of legroom. Thanks to careful dimensioning and the finely poised interplay between the base and the extension, this table is incredibly easy to handle. A mechanical table lock ensures maximum stability, even when the table is fully extended, and the fittings are concealed by panels whether it is extended or not. The synchronised extension mechanism therefore blends seamlessly into the table's slender silhouette.

A lifelong companion

nya sets a high benchmark not just in terms of design and craftsmanship, but also when it comes to sustainability: made from solid hardwood sourced from sustainable forestry and paired with enduring metal, this table meets the highest ecological standards. The oiled wooden surfaces are non-toxic and repairable. The table is also simple to dismantle, which makes it easy to move and means it takes up less space in transit, thus reducing the carbon emissions generated during transport. The materials are chosen based on strict criteria to ensure they can be fed back into the right cycles according to type. All this makes nya an ecologically sophisticated piece of furniture that people can enjoy for a lifetime – absolutely in line with the brand values of TEAM 7.



NOVELTIES 2026

STYLE AND COMFORT, PERFECTLY PITCHED – THE NYA CHAIR BY TEAM 7

Design: Stephanie Jasny

Soft lines and organic proportions give the nya chair its sense of sculptural elegance. All of the design elements are kept deliberately simple, creating a piece conceived for longevity in form, function and finish, without compromising on comfort. Together with the table of the same name, the nya chair forms a wonderfully well-matched ensemble that lends its surroundings a timeless and inviting ambience.

A stylish and organic silhouette

Inspired by the sensual beauty of nature, the gently flowing contours of the seat shell form a graceful, organic silhouette. Precisely placed seams frame the upholstered surfaces and bring the seat and backrest together into one harmonious unit. They are visually separated by a clearly defined division, creating striking lines that add extra impact to the chair's distinctive look. The seat shell also serves as a comfortable armrest, with its curved edges smoothly tapering off towards the front. The height of the seat has been deliberately set to support comfortable sitting, while also ensuring that the chair can be tucked under most tables to save space.

Comfortable, but not confining

The nya chair's generous upholstery hugs the body and guarantees maximum comfort even when sitting for long periods. This exceptional level of comfort is enhanced by a choice of carefully selected fabrics and leather, offering ample scope for giving the chair its own unique character. The base is formed out of a strong yet lightweight foot frame in clay-coloured and matt black metal, which echoes the signature design of the nya table. A 360° swivel function creates freedom of movement and makes it easier to chat and interact at your leisure around the table. An integrated return mechanism hidden in the chair base brings the seat shell discreetly back to its original position when you stand up to keep everything looking perfectly neat and tidy.





NOVELTIES 2026

ORGANIC DESIGN WITH A LIGHT TOUCH – NYA OCCASIONAL FURNITURE BY TEAM 7

Design: Sebastian Desch

Fine craftsmanship that flows seamlessly: the nya sideboards, highboards and display cases take up the elegant stylistic elements of the nya table and deftly recreate them in a collection of functionally versatile furniture. One of the defining design details is their distinctive rounded corners, a hallmark feature throughout the nya family.



The look of lightness

The precisely formed base is particularly striking: the metal legs in clay colour or matt black are a subtle take on the main stylistic feature of the nya table, echoing the organic curves of the table frame. Standing at a height of 24 cm, they deliberately raise the body of the furniture off the floor, giving it a distinctly airy, almost weightless appearance. Alternatively, there is the option of a wall-mounted version for the sideboards or a recessed plinth. The nya sideboards, highboards and display cases also offer the flexibility to fit into a wide variety of room settings and interiors. They can be configured in up to 32 different ways according to personal preference – with 13 different types of wood or a mirrored front partition option available, for example. A choice of four MDi surfaces adds extra scope for customised design.

The art of asymmetry

nya sideboards and highboards can also come with all kinds of combinations of drawers and hinged doors. The deliberate asymmetry in the arrangement of the individual elements creates a captivating and contrasting look, further accentuated by the mix of solid wood and MDi. The optional vertical milling on the fronts and side panels highlights the solidity of the wood and makes the natural wooden surfaces exquisitely appealing to the touch. This careful attention to detail is also evident in the choice of materials: with its incredibly precise texture and even colouring, MDi is considered the next generation of ceramic. The result is a seamless colour gradation from the top to the fronts and fine, continuous graining running down the full length of the furniture.



The effect of elegance

With their interplay of solid wood, transparency and light, the nya display cases create an appealing and atmospheric ambience. Aluminium frame doors in clear or smoked glass strike a harmonious balance between cosy comfort and stylish sophistication. They also offer a glimpse of the fine wood inside, where integrated LED lighting adds softly glowing accents. In this attractive showcase, selected objects can be artfully staged while others remain hidden in the solid wood drawer. nya display cases are available with a double door made of glass or a combination of glass and wood, again with the option of vertical milling on the wooden surfaces for extra visual depth. The slender legs are colour-coordinated with the aluminium frame doors, adding to the sensual appeal of the overall design.



NOVELTIES 2026

ORGANIC STYLE SHOWCASED WITH SKILL – THE NYA KITCHEN BY TEAM 7

Design: Sebastian Desch

Inspired by natural contours and gentle curves, the nya kitchen is characterised by its precise lines and finely poised design style. The nya table, chair and matching occasional furniture form a collection that creates flowing transitions between living areas – and embraces interior design as a holistic concept.

Creating connections by design

Carefully defined curves at the corners of the kitchen island and tall cabinets break up the angular basic shape of the nya kitchen in subtle way. The round bar top adds extra emphasis to this effect, deftly yet discreetly picking up the signature organic lines that run through the entire nya range. Meanwhile, the cubic sink unit provides a deliberate contrast, producing a more intense and refined overall look.

Kitchen design with distinction

The nya kitchen owes its subtle yet striking design to its balanced blend of materials. The dark tone of the smoked oak creates an impression of timeless elegance, while the vertical milling on the fronts adds distinctive visual depth. The brushed wooden surfaces have a smooth, silky feel – the tangible result of artisan craftsmanship at its finest, which is also evident in the gently rounded edges of the wooden sides. Wooden recessed grips throughout emphasise this attention to detail and lend clarity, finesse and coherence to the overall kitchen design.



Extensive planning possibilities

The innovative top cabinets in particular, with a depth of 56 cm, open up all kinds of possibilities when it comes to kitchen planning: They frame the generous alcove like an arch, creating useful storage space, while the recessed display cabinets with fine aluminium frame doors and LED lighting add yet another accent to the design. With kitchen units running around the corner to meet a filigno shelf unit, this kitchen design also creates a flowing transition into the dining and living area. Another distinctive feature is the concealed space that can be integrated into the row of tall cabinets and accessed via a barely visible door. Custom-crafted from floor to ceiling and thought through in every detail, the nya kitchen brings sophisticated design, artisan craftsmanship and natural beauty into any home.



NOVELTIES 2026

THE ESSENCE OF TEAM 7 – CORE OCCASIONAL FURNITURE

Design: Sebastian Desch

With its minimalist elegance, core embodies the TEAM 7 brand – the pure essence of design, wood and craftsmanship. Conceived for use in all living areas, core's simplified range of variation makes it the ideal introduction to the world of TEAM 7.

Pared down to the essentials

core creates impact through its uncompromising simplicity and expert execution combined with the sheer beauty of solid wood. core sideboards and highboards celebrate a new form of restraint. Their subtle stylistic elements allow the natural material to take centre stage, showcasing its distinctive texture with a consistently vertical grain. The fronts and sides form a continuous, three-sided enclosure with visible end-grained wood – a fine detail that makes the precision craftsmanship truly tangible. Meanwhile, the slightly protruding edge at the top of the front serves as a handle for drawers and hinged doors.





Artisan craftsmanship at its finest

The apparent simplicity of core's design is down to exceptionally skilled craftsmanship. Solid wood sides and fronts made of three-layer panels with a rebate joint to form a harmonious whole based on a sophisticated structural concept. The result is a series of pieces of furniture that owe their aesthetic appeal to the visible quality of the wood, and their stability to the sturdy robustness of their materials. The end-grained edging offers further proof of the attention to detail in crafting this furniture, as do the hand-selected wooden surfaces with a continuous vertical grain. Plinth legs measuring 25 mm subtly raise the furniture off the floor, while height adjusters on the inside make it easy to balance out any unevenness.

Simple designs, versatile combinations

Whether it features as a sideboard, highboard, chest of drawers or bedside table, whether it is part of a wall unit or in the hallway – core blends harmoniously into any living area. Eighteen carefully defined models make planning simple. And with their understated style, these pieces are ideal for combining with other TEAM 7 furniture collections, too. Various wood types and an optional glass, ceramic or leather top cover in a choice of colours offer plenty of scope for creative design. A removable wooden tray is available as a clever addition, creating a second compartment within a drawer, and there is even the option to have it fitted with a cutlery insert or leather bottom.





NOVELTIES 2026

COMPOSITIONS OF HAPTIC DEPTH AND ELEGANT NUANCES – NEW MATERIALS AND COLOURS



nya chair with Glory beige fabric

A new fabric collection – Glory

With its modern style, fine texture and sumptuously soft feel, the new Glory bouclé collection is a great addition to the TEAM 7 fabric range. Ten carefully coordinated colours with a matt tone-on-tone look offer fantastic scope for creating timeless interior designs. Combined with solid wood, the natural beige, grey and brown shades evoke a sense of calmness, warmth and harmony.

The new fabric collection is made of 100% polyester. A special yarn twisting technique gives the bouclé texture extra stability and volume, making it soft and smooth to the touch. This robust fabric is highly durable and hard-wearing – ideal for intensive use in home or commercial interiors. Unmixed processing means that the material can be recycled efficiently and sustainably, giving it a long lease of life within the circular economy. Glory is certified to OEKO-TEX® STANDARD 100.

New MDi colour – umbra marrón

The new MDi colour umbra marrón is inspired by a type of quartzite from Brazil. With its fascinating interplay of red, brown and black tones, the smooth, appealing surface finish has the feel of natural stone and creates subtle contrasts of depth and shadow. This dark, expressive shade radiates a sense of warmth. Combined with dark wood types in particular, umbra marrón sets atmospheric accents within an interior space.

As the next generation in ceramic, MDi (Minerals, Design, innovation) by Inalco is noted for its aesthetic, environmentally friendly and resistant qualities. Using an innovative production technology, minerals of the highest purity are carefully selected to create a material with an incredibly precise texture and consistent colouring throughout. The surfaces are also highly resistant to heat, scratches and stains.



nya kitchen in smoked oak with MDi surface in umbra marrón

New metal colour – clay

TEAM 7's new clay metal colour brings a perfect blend of elegance and natural beauty to the interplay between wood and metal. The clay-coloured matt finish with a subtle metallic shimmer lends every piece of furniture a sense of sophisticated refinement and blends beautifully with the warmth of a natural ambience. This soft shade suggests calmness and balance, while the stylish metallic effect adds an exclusive touch. Combined with the compelling character of wood, it creates atmospheric interiors with a modern yet cosy ambience, full of expression in dark, warm tones.



nya chair with clay metal frame and Glory hazel fabric, as well as nya table in smoked oak with clay metal frame

INTERVIEW



“WE WANTED TO BREAK NEW GROUND”

Stephanie Jasny combines clean design language with an intricate understanding of materials to create furniture that is both timeless and astounding. The Berlin-based designer and TEAM 7 are a perfect match. In this interview, Jasny talks about bouncing ideas around with others, what inspired *nya*, and the challenges involved in making ideas a reality.

Ms Jasny, how did the collaboration between you and TEAM 7 come about?

TEAM 7 approached me almost exactly a year ago asking if I might be interested in working with them. It was a wonderfully collaborative experience right from the start. Although I was responsible for the actual design work, we were in very close contact throughout the project. I was involved in every decision-making process; we developed a kind of back-and-forth relationship, inspiring each other by bouncing ideas around. For example, TEAM 7 brought in feedback from its various departments like sales and distribution, some of which sparked the idea to

move away from the original design for the *nya* table. I'd envisaged a wooden frame, but during the development process it quickly became clear that a metal frame would look much more impressive.

So it was also about trying out something new and unexpected?

Yes, we wanted to break new ground and develop something that was brand new to the TEAM 7 portfolio. Wood always has been and always will be the most important material for TEAM 7, and it's used in an impressive breadth of its products. The metal frame, however, gives it a powerful counterpart – reminiscent of a ring cradling a diamond. It gives the whole thing more structure, greater impact, than if everything were made of wood. Like fashion, architecture and interior design thrive on contrasts. You can see this very clearly in the *nya* table. The two materials mirror each other to a certain extent, and the contrast with the metal makes the wood all the more impactful.

How would you describe the design approach you took for *nya*?

We envisioned an organic design language – open and light, yet cleanly defined. We wanted to consciously break up the soft curves by incorporating elements like clear edges. That's the central design principle of the chair and table. *nya* exudes an aura of elegance and modernity that's more typical of products from Italian or Scandinavian manufacturers. It was also important for us to strike the right balance so that both the table and chair slot into the TEAM 7 range in a way that makes sense. Neither was intended to be a standalone piece in the collection, but more a natural progression, the logical next step.



The chair now resembles a flower unfurling its petals...

We actually did draw inspiration from nature for the design. The table frame is reminiscent of the fork of a tree branch, for example. We also wanted to pick up on this element in the chair. It reminds me a ginkgo leaf, whose lobes incline subtly to one side. I didn't want to leave it at the soft, unfurling stage, though. Like with the table, I wanted there to be a contrast. And that's why we made the conscious decision to incorporate a hard edge. You might not notice it at first glance, but alongside the inward curves, the outer shape is clean and precise. I wanted to use this contrast to create a subtle aesthetic tension.

What challenges did you face in creating the pieces?

For me personally, the challenge was to think in terms of a new material – in this case die-cast aluminium – and to continuously develop the design with this in mind. Many people think that design is just handing over a few drawings that the manufacturer simply has to implement. But that's not how it works at all. The most important part of designing is thinking within certain frameworks. Working within the paradigms of manufacturing to develop a product that works in terms of both production technology and price. Which makes it all the more crucial to overcome small and large obstacles together and stay relaxed and open.

What kind of obstacles did you have to overcome?

The extension technology for the table was something we had to work on intensively. It had to fit seamlessly into the overarching refined aesthetic and therefore had to be particularly slim. The entire design is characterised by this delicate quality. The material volume of the metal frame is reduced to a minimum, so the table top also had to appear as light as possible. Every additional millimetre would have quickly made the design look bulky, as if a top panel that was too heavy was lying on a frame that was too narrow. TEAM 7 came up with the perfect solution. The sloping waterfall edge is beautifully implemented. It's amazingly smooth, a real pleasure to touch.

Knocking on wood here, are there any more collaborations with TEAM 7 in the pipeline?

I would love to work with them again! TEAM 7 is a tradition-rich company with unbelievable potential. It's full of great people who put their heart and soul into their work. For me personally, the company's commitment to sustainability plays an important role, too. Many manufacturers find it very difficult to implement sustainability measures in an authentic, credible way without greenwashing. TEAM 7 does it with every component of its products, which is truly remarkable. Many companies may claim to do it – but very few can actually keep that promise.



PORTRAIT

TEAM 7 – THE ART OF LIVING WITH WOOD

Humankind has developed alongside its natural environment over many thousands of years. Our senses, our body and our mind as we know them today are the result of our long evolution in the outdoor world. Which is why a natural material such as wood appeals to us on every sensory level – its characteristic scent, the silky soft feel, its vibrant, always unique grains. It reminds us that our own roots lie in nature. That we are a part of the natural world. TEAM 7 has made it its mission to translate the beauty and originality of wood into ever-changing, extraordinary forms.

Pioneer and global market leader

Founded as a small joinery in 1959, the company has been inspiring people for decades with furniture that not only looks good, but also feels good – bringing a sense of elegance and warmth into the home. It combines clear designs with Austrian craftsmanship, state-of-the-art technology with a real commitment to sustainability. Its range and vertical integration is unique, with standalone pieces set alongside holistic living concepts that are tailored specifically to the individual customer's preferences. This is something that TEAM 7 can only do because it keeps the entire supply chain in its own hands, from the raw timber to the finished furniture. It is the global market leader in sustainable solid wood furniture, operating 18 of its own flagship stores in Germany, Austria and Switzerland as well as 8 partner stores around the world.

Elevated interior design

TEAM 7 produces customised solutions that add sensuality, character and soul to any space. Sophisticated and refined down to the tiniest detail, they boast a long functional and aesthetic lifespan. Wood is the crucial element in its pieces. With respect and passion, the designers at TEAM 7 engage anew with the unique richness of this natural material, over and over again. They translate its vibrant aesthetic into a clear, timeless design style that delights and inspires whole generations. A design style that has won the company more than 60 international awards and prizes.

Healthy homes

The presence of solid wood in the home not only gives it a stylish edge, but can also help make it a healthier place in which to live. It creates a regenerative living space that is completely in harmony with our physiology by absorbing and releasing moisture from the air. With every touch, the open-pored wood creates a fundamental feeling of calm and security. Its antistatic and antibacterial effect also plays a significant role in creating a positive indoor environment. TEAM 7 preserves these special properties by finishing the surfaces of its products exclusively with pure natural oil. This ensures that the beauty and authenticity of solid wood is expressed in every single piece of furniture.

Custom-made living experiences

The Upper Austrian manufacturer firmly believes that living spaces should be as distinctive as the people who live in them. This mission to produce exclusive design goes hand in hand with a wealth of planning expertise, enabling TEAM 7 to manufacture its furniture precisely in accordance with the planning briefs. This applies to the dimensions and surfaces of the individual items just as much as to interior organisation, the choice of materials and even the tiniest details of the workmanship. But that's not all: the manufacturer also offers tailored living concepts that take account of individual customer needs and unique architectural features in equal measure. This results in custom interiors that harmoniously balance texture and volume, shapes and colours. From the kitchen to the dining and living room, from bedrooms and kids' rooms to home offices, the range covers every part of the home – facilitating seamless transitions with precisely coordinated components. Working closely with its customers, TEAM 7 can craft a home tailored entirely to the needs of the people living in it.

Tradition x technology

The handcrafted quality of the furniture and the virtually unlimited possibilities afforded to the design of bespoke interiors are all thanks to a unique expertise with wood that you won't find anywhere else in the world. The natural material is processed with precision, skill in engineering and innovative production methods. TEAM 7 employs mainly highly skilled cabinetmakers who have mastered their craft at the very highest level, as well as 21 apprentices-in-training. Technology and tradition are complementary, not conflicting, ingredients in this recipe for success that ensures excellence across the board. The innovative nature of this combination is reflected in the company's 3-layer technology, for instance, where three layers of the finest hardwood are glued together transversely. This gives the panels enormous stability, yet allows unimagined freedom in terms of design and functionality.

Sustainable is as sustainable does

A key principle of custom furniture is that it helps reduce resource and energy consumption. This is why it forms such an integral part of TEAM 7's efforts to make an active contribution to mitigating climate change and protecting the environment. An eco-pioneer since day one, the company has set itself the goal of developing the most eco-friendly and efficient solid wood manufacturing system in the world. From durable design, manufacturing and logistics to reparability and reintegration into the natural cycle. All of the timber comes from sustainably managed forests, including some from the company's own woodlands. Controlling the entire supply chain guarantees high-quality, environmentally friendly production. All manufacturing is based at the company's Austrian sites in Pram and Ried, supported by local partners and suppliers. TEAM 7 also carries out ongoing analyses and other measures in an on-going effort to shrink its own environmental footprint even further – endeavours that have been regularly rewarded with EMAS certification and the Austrian Ecolabel.

Putting the 'green principles' into action

The green vision espoused by the family business is demonstrated in truly impressive fashion at its head office in Ried. A showpiece project for green building, TEAM 7 World unites contemporary architecture and an uncompromising commitment to sustainability. The imposing wooden building is a place where the love of wood and nature can be felt with all the senses. It is an inspiring place that brings the brand's values to life. TEAM 7 draws on this inspiration as it continues on its unique ecological path, demonstrating that a modern lifestyle and the responsible use of our planet's finite resources are not mutually exclusive.



DESIGNER PORTRAITS

Sebastian Desch | *Head of Design*

- Born in Ried im Innkreis, Austria, in 1974
- **Training:**
 - cabinet maker training
 - interior architecture and furniture design at the HTBLA Hallstatt
- **Career milestones:**
 - architectural firm Bauböck, Ried im Innkreis
 - from 1994 interior architect and stylist at TEAM 7
 - from 2008 designer for TEAM 7
 - from 2015 Head of Interior Design
 - from 2016 as Head of Interior Design responsible for the design of selected new products, further development of the existing TEAM 7 product range and the overall corporate architecture of the TEAM 7 brand
- **Designs for TEAM 7 (selection):**

nya kitchen, nya occasional furniture, nya occasional furniture, miró table, pur kitchen, echt.zeit kitchen, echt.zeit table, ur coffe table, graphic design element, loft kitchen, cubus pure living room range, hood clotz rack, sol solo piece, filigno writing desk, c3 coffee table, ark bar stool
- **Major design awards:**

iF DESIGN AWARD, Red Dot Award, BIG SEE Award, RAUM UND WOHNEN Möbel des Jahres, GREEN GOOD DESIGN Award, ICONIC AWARDS: Interior Innovation



Stephanie Jasny | *Designer*

- Born in Munich in 1982
- **Training:**
 - Studied at the Berlin University of the Arts; graduated 2008
- **Career milestones:**
 - 2009–2014 Artistic Assistant at the Berlin University of the Arts – College of Architecture, Media and Design/Product Design
 - 2015 Visiting Professor at the Berlin University of the Arts – College of Architecture, Media and Design/Product Design
 - 2015–2019 Art Director at Heine/Lenz/Zizka Projekte GmbH, covering brand communication and product design for brands including Leica Camera, Hamburger Kunsthalle and USM Haller
 - 2010 Founded Studio Stephanie Jasny
 - 2010 Cordula floor lamp added to the permanent collection at Die Neue Sammlung – The Design Museum in Munich
 - 2019–2023 Creative Director for the Australian furniture company NOMI
 - Led projects with manufacturers such as Ligne Roset, The Hansen Family, Miniforms, Punt Mobles and NOMI (Australia).
- **Designs for TEAM 7:**

nya table and nya chair
- **Major design awards:**

German Design Award



Prof. Jacob Strobel | Designer

- Born in Würzburg, Germany, in 1978
- **Training:**
 - learned the craft of furniture making in his uncle's carpentry business as a teenager
 - studied wood design at the Faculty of Applied Arts Schneeberg, Germany
- **Career milestones:**
 - 2009 bis 2014 Head of Design bei TEAM 7
 - from 2014 professor at the Faculty of Applied Arts Schneeberg (Faculty of the West Saxon University of Applied Sciences of Zwickau)
- **Designs for TEAM 7 (selection):**
 - lui chair family, tak table, nox table, nox bed, yps table, stern coffee table, aye chair
- **Major design awards:**
 - Red Dot Award, GREEN GOOD DESIGN Award, iF DESIGN AWARD, ICONIC AWARDS: Interior Innovation



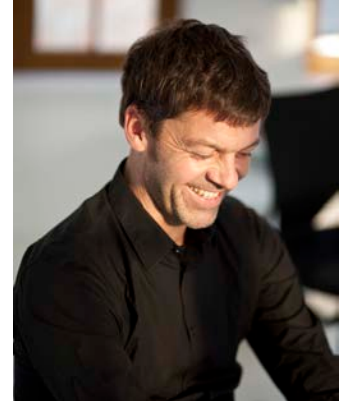
Kai Stania | Designer

- Born in Salzburg, Austria, in 1965
- **Training:**
 - studied architecture at TU Wien (Vienna University of Technology), graduated with distinction in 1996
 - industrial design at the University of Applied Arts Vienna
- **Career milestones:**
 - became project leader at Ron Arad's studio in London in 1993
 - became university assistant at TU Wien in 1996
 - 1996 to 2008 university assistant at the Institute of Building Construction and Design at TU Wien
 - in 2002, founded his own design office "kai stania | product design"
 - works with TEAM 7, De Sede, Spectral, Bene, Wittmann, Rolf Benz, Cerrutti, Ungaro, Nina Ricci and Hugo Boss, among others
- **Designs for TEAM 7 (selection):**
 - pisa desk and desk pedestal, k7 kitchen, riletto bed, float bed, lift coffee table, atelier desk, loup side table, times bed
- **Major design awards:**
 - GOOD DESIGN Award, Red Dot Award, iF DESIGN AWARD, Interior Innovation Award, Design Plus Award



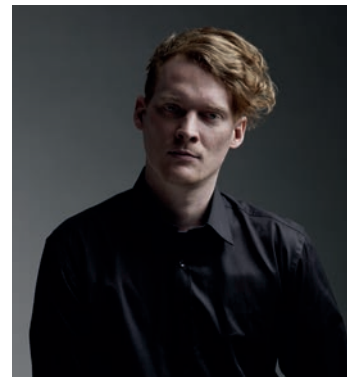
Dominik Tesseraux | Designer

- Born in Bensheim, Germany, in 1966
- **Training:**
 - cabinet maker training
 - product design, Darmstadt University of Applied Sciences
- **Career milestones:**
 - Neumeister Design
 - Artefakt
 - Phoenix Design
 - since 2001 – tesseraux+partner, Potsdam, Germany
 - since 2015 – collaboration with TEAM 7
- **Designs for TEAM 7 (selection):**
 filigno coffee table, filigno kitchen, filigno living room range, EDITION LIGNATUR bathroom furniture (co-produced by Keuco and TEAM 7)
- **Major design awards:**
 German Design Award, Red Dot Award, ICONIC AWARDS: Innovative Interior, iF DESIGN AWARD, GOOD DESIGN Award



Stefan Radinger | Designer

- Born in Krems, Austria, in 1986
- **Training:**
 - New Design University St. Pölten, sustainable product development studies
 - University of Arts Linz, industrial design, scionic studies
- **Career milestones:**
 - worked during his studies in various design agencies for clients such as Swarovski, Porsche Austria, KTM, EADS, Rosenbauer, Kapsch etc.
 - in 2012 he founded STUDIO SR.ADD, with a focus on communication design and industrial design
 - collaborates with brands, companies and artists in Europe, Australia and the United States, works for Bene AG, TEAM 7, walden, Berndorf and Joseph Organic
- **Designs for TEAM 7 (selection):**
 kids children's range, light bed, italic ladder, sidekick side table
- **Major design awards:**
 German Design Award, Red Dot Award, iF DESIGN AWARD, Compasso d'Oro, IDA Award/Los Angeles, Young and Design/Milano, Austrian Interiors, Austria Iconic Award



Lucie Koldova | Designer

- 1983 born in Czech Republic
- **Training:**
 - studied at the Academy of Art, Architecture and Design in Prague
- **Career milestones:**
 - 2010 2010 Balloons and Muffins lighting collections for Brokis
 - 2012 Lucie Koldova Studio, Paris
 - since 2013 Creative Director at Brokis
 - 2018 "Das Haus" imm cologne ideal home project
 - 2021-2023 solo exhibition „Lightness“ at the Moravian Gallery in Brno
 - since 2014 Lucie Koldova Studio, Prague
 - designs mainly lights, furniture and glass sculptures for international clients such as Brokis, TON, Todus, Freifrau, Fabbian illuminazione, Haymann Editions, Per/Use, La Chance
 - lately working on hotel projects and interior designs
- **Designs for TEAM 7 (selection):**
 - elliot Lounge Chair
- **Major design awards:**
 - Red Dot Award, GOOD DESIGN Award, German Design Award, Elle Deco International Design Award, Grand Designer of the Year/Czech Grand Design Award



This Weber | Designer

- Born in Zurich, Switzerland, in 1973
- **Training:**
 - trained to become an engineer
 - jewellery and industrial design at the Zurich University of Design and Art (today called the Zurich University of the Arts (ZHdK Zürcher Hochschule der Künste))
- **Career milestones:**
 - from 1999 product designer at Haerberli Marchand Product Development in Zurich
 - worked from 2000 in product development at Gebrüder Thonet GmbH in Frankenberg, Germany
 - from 2001 product designer at Christophe Marchand Product Development in Zurich
 - from 2006 responsible for the furniture design projects at Hannes Wettstein in Zurich
 - since 2010: own studio This Weber Design Unlimited in Zurich
 - designs for international manufacturers such as Atelier Pfister, Crassevig, Fiam Italia, Intertime, Rolf Benz, Very Wood (Gervasoni Group))
- **Designs for TEAM 7 (selection):**
 - taso table, flor chair and bench
- **Major design awards:**
 - German Design Award, ICONIC AWARD: Innovative Interior, Interior Innovation Award



Martin Ballendat | Designer

- Born in Bochum, Germany, in 1958
- Training:
 - design studies at the Folkwang University of the Arts in Essen
- Career milestones:
 - Sedus
 - Head of Design and Development at Wiesner-Hager
 - visiting professor for design at the universities of applied sciences in Graz and Salzburg
 - since 1995 – working for more than 40 renowned brands in 16 countries at Atelier DESIGN BALLENDAT (in Upper Austria and Germany)
- Designs for TEAM 7 (selection):
 - girado chair
- Major design awards:
 - Designer of the year in UK 2019, Red Dot Award, iF DESIGN AWARD, German Innovations Award, ICONIC AWARDS: Best Interieur Innovations, Design Plus Award, Österreichischer Staatspreis





CONTACT

TEAM 7 Natürlich Wohnen GmbH
TEAM-7-Platz 1 | A-4910 Ried/Innkreis
Telephone: +43 7752 977-700
E-mail: info@team7.at | www.team7-home.com

Contact information for editorial offices:

GeSK agentur für public relations
Ziegelstraße 29 | D-10117 Berlin
Telephone: +49 30 21750460
E-mail: pr@gesk.berlin | www.gesk.berlin